



SW956E

Overall weight
20000kg

Standard bucket capacity
3.2m³

Rated load capacity
5800kg



HUZHOU SANY LOADER CO., LTD
<http://www.sanyglobal.com>

This manual was printed in 2023. The product information may have been changed when you read it. Products (including specific configuration, detail, etc.) are based on the specific models and products applicable to markets outside China, which are displayed and sold by agents. For more details, please visit the local authorized agent of SANY Heavy Machinery Ltd.

Economic efficiency

- Save fuel cost — — Euro 13.26/hour
Euro 26,520/year (working for 2000 hours)
- Reduced annual use cost — — Euro 34,706/year (working for 2000 hours)
- In 5 years, save — — — Euro 173,530/year (working for 10,000 hours)

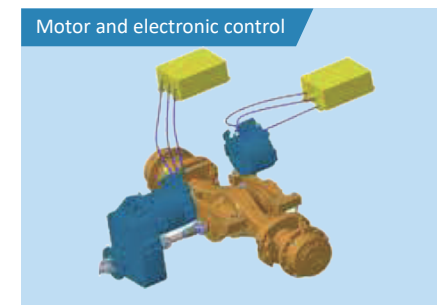


High-end configuration in the industry Safe and Reliable

▶ A high-capacity battery assembly is adopted, which is reasonably arranged, and meets the safety requirements.



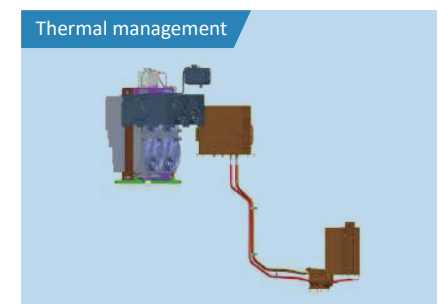
▶ The motor has the maximum efficiency of 95%, and the peak torque of 2,500 N.m. The protection grade of battery, motor, electronic control system and other key components reaches IP67, thus ensuring the reliable operation in rainy and snowy weather and wading conditions.



▶ The efficient two-speed gearbox with the aggressive switching and smooth shift is developed independently.



▶ Internationally renowned brand Easily cope with the harsh working conditions of $-20^{\circ}\text{C} \sim 45^{\circ}\text{C}$.



Advanced energy-saving technology

▶ Advanced energy-saving technology

Innovate and lead the energy recovery technology of electric loaders, and convert the kinetic energy into the electric energy for storage during the brake process to reduce the energy consumption of electric loader by 18%.

▶ Brake priority

Avoid the brake disc from being worn due to power when braking. Recover more brake energy and reduce the energy consumption. Avoid driver's misoperations to cause an accident. When an abnormal vehicle signal is sent, the brake priority is safer.

▶ Intelligent temperature control air conditioning system

Adjust the set temperature through the smart screen, automatically maintain the ambient temperature, achieve the variable frequency regulation of refrigeration and heating, and be energy saving and comfortable, safe and reliable.

▶ Intelligent start-stop technology

Create the intelligent start-stop technology in a ground-breaking way. Identify the driver's intention, and stop the pump motor when the vehicle is in a non-working state. It solves the problem of standby energy consumption loss, and reduces the energy consumption of electric loader by 5%.

▶ Intelligent battery thermal management system

The liquid cooling structure is adopted in the battery for cooling. Based on the target temperature required by the battery, the modes of refrigeration and self-circulation are adopted duly to save energy and reduce consumption. The PID algorithm is used to adjust the rotating speed of compressor and electronic fan in the refrigeration system, to control the temperature precisely, so as to realize the energy-saving control.

▶ Electrically-controlled intelligent heat dissipation of motor

The electronic fan achieves the zone control, oil and water radiators are distributed independently with stepless speed regulation, and be quiet and energy-saving.

Convenient charging

Standard interface: compatible with DC piles of all manufacturers in the market



Super adaptability: support fast charging in extremely cold and hot environments

Parameter category	Parameter value
Battery capacity	350kw.h*
Scope of use environment	-35 ~ 65°C

Fast charging: The theoretical charging time of charging pile of above 300 kW is shorter than 1 h*2

Charging pile power	Charging time
240 kW charging pile	282 kWh Approx. 75 min 350 kWh Approx. 90 min
300 kW charging pile	282 kWh Approx. 60 min 350 kWh Approx. 75 min

Double-gun fast charging: The maximum charging current is 400 A.



*1. The 282/350 kWh battery is optional for 5 t models.
*2. The required duration for charging from 20% to 100% power in case of double-gun charging under standard test conditions. The actual charging time is affected by the power of charging pile, ambient temperature and altitude.





Luxury Cab, More Comfortable to Operate and Drive



► Pure silence

- ◎ Excellent sealing performance, 10% higher than fuel loader
- ◎ Comfortable drive and noise as low as 68 dB



► Low vibration

- ◎ Silicone oil suspension technology, high-end configuration in the industry, and excellent vibration isolation performance of cab
- ◎ Vibration of electric drive system of new energy vehicle reduced by 30% compared with that of electric drive system of traditional fuel vehicle



► Low vibration

- ◎ High-power heating and cooling air conditioner, fully meeting the heating and cooling requirements in the ambient temperature range of -30℃-50℃
- ◎ Large-size full HD glass, and panoramic super-large space with a wide view



◎ Easy, flexible and quick operation

- Multifunctional integrated handle
- One-button shift, fingertip switching



◎ HD display, touch operation

- One-screen viewing of whole machine's information
- Real-time reminder of monitoring information



◎ Integrated control, and intelligent and convenient operation

- One-button start and stop
- Graphical integrated soft key

Ultra-long warranty period

Complete machine: 2 years and 4,000 hours

Electric drive system: 5 years and 10,000 hours

Battery system: 5 years and 10,000 hours



One Bucket in One Working Condition

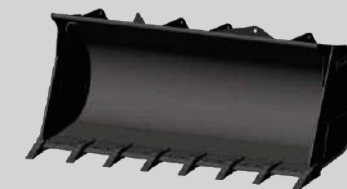
The SANY SW956E electric wheel loader can be equipped with 3.1 m, 3.4 m and 3.6 m booms. A variety of special buckets are provided according to the actual working conditions of customers. The standard 3.5 m³ cutting board bucket is provided, which can be equipped with 9 kinds of serialized buckets, meeting the requirements of "one bucket in one working condition", improving the construction efficiency, easily coping with various complex working conditions and enhancing the product value.

Boom length (m)	Bucket (m ³)	Unloading height of forward shovel (mm)	Unloading distance of forward shovel (mm)	Side unloading height (mm)	Side unloading distance (mm)	Remarks
3.1	2.7	3152	1077	/	/	Rock bucket
	3.0	3140	1131	/	/	Toothed bucket
	3.2	3069	1201	/	/	Cutting board bucket
	3.5	3012	1257	/	/	Cutting board bucket
	2.8	2720	1415	4175	70	Side dump bucket
3.4	3.0	3465	1212	/	/	Toothed bucket
	3.2	3399	1286	/	/	Cutting board bucket
	3.5	3345	1345	/	/	Cutting board bucket
	4.0	3258	1442	/	/	Cutting board bucket
	5.0	3171	1539	/	/	Cutting board bucket
3.6	3.0	3634	1203	/	/	Toothed bucket
	3.2	3560	1270	/	/	Cutting board bucket
	3.5	3500	1324	/	/	Cutting board bucket
	4.0	3403	1411	/	/	Cutting board bucket
	5.0	3307	1498	/	/	Cutting board bucket

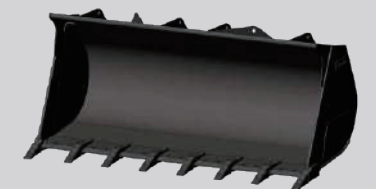
2.7 m³ (rock bucket)



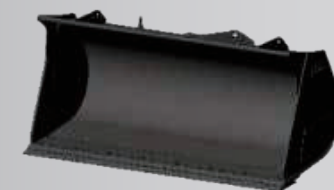
Wood hopper (staggered teeth)



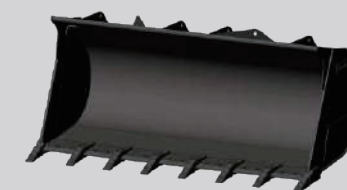
3.0 m³ toothed bucket



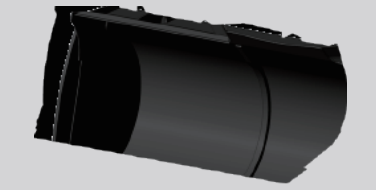
3.2 m³ cutting board bucket



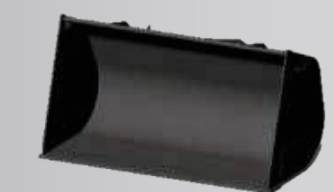
3.5 m³ toothed bucket



3.5 m³ cutting board bucket



4.0 m³ coal bucket



5.0 m³ coal bucket



2.8 m³ side dump bucket



Refined Improvement

Layout of wiring harness and pipeline: horizontal and vertical layered layout, and be safe and worry-free



Experimental Durability Upgrade

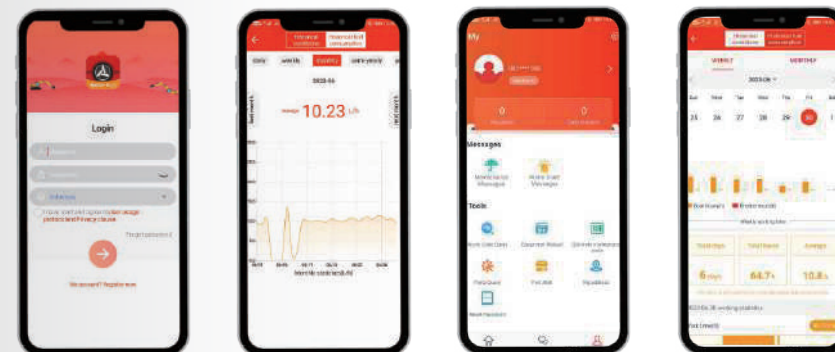
Strengthened quality, bump resistance and durability



“EVI” customer management system

The machine is equipped with “EVI” system which is independently developed by SANY. SANY has established four-dimension construction management system including “factory- agent- owner- operator” for the purpose of minimizing customer construction management cost and risks, and maximizing the efficiency.

The mobile phone can be controlled with one click through the EVI APP to view the machine status, and various services can be reserved online through EVI.



Complete research development and test system

Complete research, development and test system is the strong backup for excellent performance.

It has established complete machine endurance test center with full functions. Each model of excavator must be subjected to over 2,000h field excavating test.

Key components like working device, cab and hydraulic components etc. must be subject to fatigue test over 800,000 times.

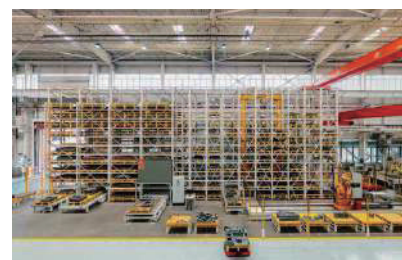


Advanced manufacturing technology

Advanced manufacturing technology is a reliable guarantee for producing excellent products.

SANY has RGV assembling line and full automatic welding robots, and possesses high precision machining equipment and precise machining center.

SANY's manufacturing and assembling lines won five-star national site in 2013 and national quality award in 2014. In 2023, SANY Mini Excavator Factory was awarded as the intelligent factory.



Parts warehouse & Service network

- Parts Warehouse: **500** parts warehouses
- 🚚 Service Network: **600** service networks and **4,000** service engineers



Technical specifications

Battery		Transmission system	
Battery type	Lithium iron phosphate battery	Gearbox	Electric drive box
Total power	350kWh /350 kWh (optional)	Gear	Speed
Nominal voltage	579.6	Maximum speed Forward gear I	≥15km/h
Protection grade of battery system	IP68	Maximum speed Forward gear II	≥40 km/h
		Maximum speed Backward gear I	≥15km/h

Traveling motor		Working motor	
Peak power	255kw	Peak power	160kw
Peak speed	3500rpm	Peak speed	3000rpm

Operating hydraulic system		Steering hydraulic system	
Type	Quantitativecombinedopenhydraulicsystem	Type	Quantitative hydraulic system
Operation mode	Pilot	Steering pump	Gear pump
Operating pump	Gear pump	Steering angle	38°
Total cycle time	10.5s		±37°

Drive axle and tire		Brake system	
Drive axle type	wet disc axle	Service braking	Full hydraulic brake
Tire specification	23.5R25 L3	Parking brake	Hydraulic brake
Tire pressure	Front/rear wheel:550±10kPa		

Capacity data			
Antifreezing fluid	35L 25L	Front drive axle oil	21L
Hydraulic oil tank	226L	Rear drive axle oil	21L

Machine dimensions

Main parameters	SW956E	Item (mm)	SW956E
Weight of complete machine (kg)	20000	A Maximum lifting height	5500
Rated loading capacity (kg)	5800	B Hinge-axis height under maximum lifting	4220
Bucket capacity (m ³)	3.5 (2.7-5)	C Unloading height	3070
Maximum breakout force of bucket (kN)	178	D Transport height	515
Maximum traction (kN)	180	F Unloading distance	1350
		H Height of complete vehicle	3710
		K Ground clearance	420
		L Length of complete vehicle (with bucket)	8552
		M Distance from hinge center to rear wheel center	1650
		N Wheelbase	3400
		P Rear overhang	2100
		α1 Bucket retraction angle at the highest position	58°
		α2 Bucket unloading angle	45°
		α3 Bucket retraction angle at transport position	53.5°
		α4 Bucket retraction angle on ground	49°
		α5 Departure angle	28°
		α6 Maximum steering angle	±37°
		W Width of complete vehicle (outside of wheel)	2816
		X Bucket width	2996
		Y Tread	2200
		R1 Turning radius (outside of bucket)	7160
		R2 Minimum turning radius (outside of wheel)	6350

